



FIRESCOPE



REMS Update 2016

A 2015 Fire Season Review

Battalion Chief Sean Fraley - Kern County Fire
Department
FIRESCOPE Taskforce Chair



Objective

- Brief History of FIRESCOPE
- Provide Original Intent of REMS
- Statistics for 2015 Fire Season
- Lessons Learned
- Avenue for Input to Improve the Position



FIRESCOPE



What is FIRESCOPE?

- Firefighting
- RESources of
- California
- Organized for
- Potential
- Emergencies



Organized in 1972 in So. Cal. Consolidated to Represent all facets in California in

1986

Represents all facets of local, rural, and metropolitan fire departments, CAL Fire, and federal fire agencies

FIRESCOPE is intended to unify these agencies into one voice and direction



FIRESCOPE



Mission

- Provide Recommendations & Technical Guidance to the Governor's Office of Emergency Services (OES) on matters involving mutual aid
- Maintain the FIRESCOPE Decision Process
- Continue the Operation, Development, & Maintenance of the FIRESCOPE Incident Command System (ICS) and Multi-Agency Coordination System (MACS)



Vision

- To Continue National Leadership in the Development of All-Hazard Incident Management and Multi-Agency Coordination Systems
- To Enhance & Encourage Full Participation by the California Fire Service in the Statewide Fire and Rescue Mutual Aid System
- To Provide a Common voice for the California Fire Service

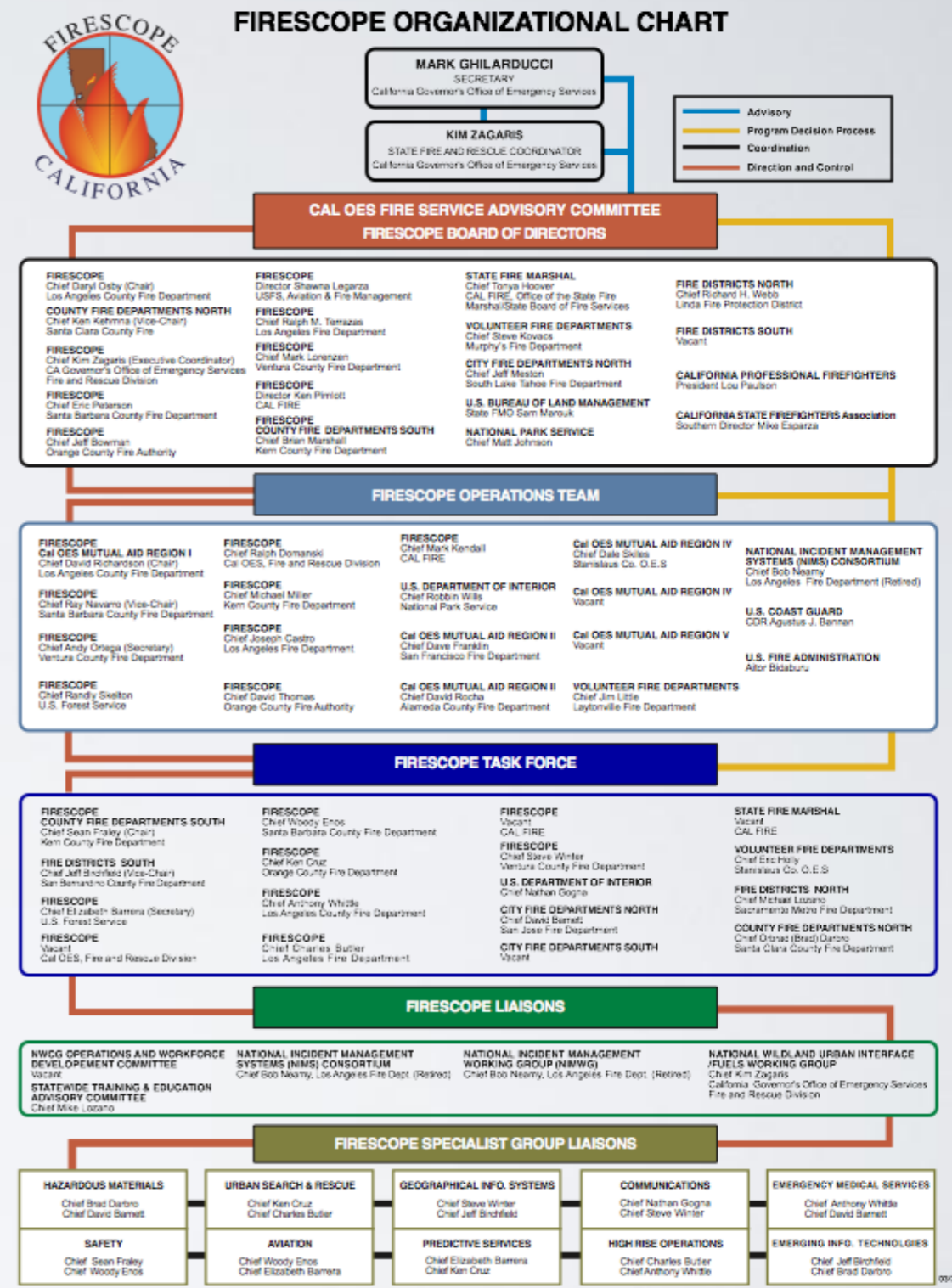


FIRESCOPE



Decision Process

- Board of Directors (Chief Executive Level)
- Operations Team (Deputy/Assistant Chief Level)
- Task Force (Battalion Chief/Manager Level)
- Specialist Groups (Standing Groups)
- Working Groups (Ad-Hoc Groups)



Membership of these include representatives from FIRESCOPE Partner Agencies, Cal Fire, USFS, BLM, NPS, County Fire Agencies, City Fire Agencies, Volunteer Fire Departments



Intent of REMS

- Provide a clear description of the role, duties and equipment pertinent to the already utilized REM (Rapid Extraction Module)
- Refine and formalize the module and create a method to order thru ROSS
- Have in place for the 2015 Fire Season



What is a REMS?

- A Pre-Staged Rescue Team Assigned to a Wildland Fire to Provide Firefighters a Safe, Effective and Efficient Method of Egress Off the Fireline in the Event of Injury or Illness Incurred During Fire Fighting Operations
- Another Option to Reach Incapacitated Firefighters When Ideal Conditions May Not Exist Due to Heavy Smoke Inversion, Lack of Roads, Equipment Malfunctions, etc.
- Does Not Intend to Replace Ground or Air Transport



Statistical Data for 2015 Fire Season

- REMS Orders Filled:
 - 28 Total (Source: ROSS)
- REMS Orders UTF:
 - 91 Total (Source: ROSS)
 - Multiple UTF for: River Complex, Fork Complex, South Complex, Nickowitz, Route Complex, Gasquet Complex, Rough



FIRESCOPE



Lessons Learned

- IMTs and Crews should learn capabilities and SOPs of REMS
- Cultural understanding between municipal and wildland agencies should occur
 - Crews taking over while REMS setting up systems
- *Source Rough Fire 2015 Lessons Learned Review Wildfirelessons.net*





More Lessons Learned

- Delays occurred due to lack of familiarity of the language on 213's when ordered by MEDL's
- Continuity of engine companies assigned to REMS would reduce need to train different crews
- Rescue rope suffered wear during training
- Overhead vs. Equipment in ROSS. With REMS being two personnel with apparatus and equipment, it may be more appropriate for the order number to be an "E"# vs. an "O"#. Relief issues occurred as Overhead while timing out, requiring to be released and re-ordered.
- 3/8" rope size is being evaluated for longer line deployment, lighter weight (Discussion with US&R specialists on possibility)



Input Avenue to Improve REMS

- Contact your FIRESCOPE Task Force Rep.
- E-Mail to:
REMScomments2016@yahoo.com

Check out the New App!

Available for Android and
IOS Devices through the
App Store and Google Store



FIRESCOPE FOG ICS 420-1

SAFETY FIRST

CHECKLISTS

ORGANIZATIONS

TACTICS

ORG CHARTS

SEARCH

FIELD TOOLS

MISSION & INTENT

PLANNING GUIDES

RESOURCES